

## Supplementary Material for

Arenas-Castro, S., Fernández-Haeger, J., Jordano-Barbudo, D., 2015. A method for tree-ring analysis using DIVA-GIS freeware on scanned core images. *Tree-Ring Research* 71(2):118-129.

Figure 1. Examples of the original and enhanced digital images of the *P. bourgaeana* (a-b) and *A. pinsapo* (c-d) cores.



Figure 2. a) Screenshot of *DIVA-GIS* with *Georeference Image* tool. b) Screenshot of *DIVA-GIS* showing a polyline-type layer including line segments drawn between pairs of consecutive landmark points. c) Rings identified by the insertion of tags (*DIVA-GIS*).

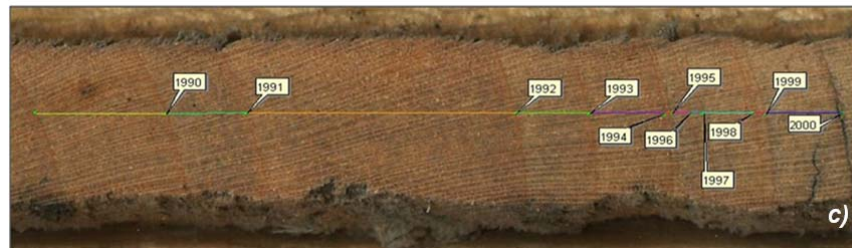
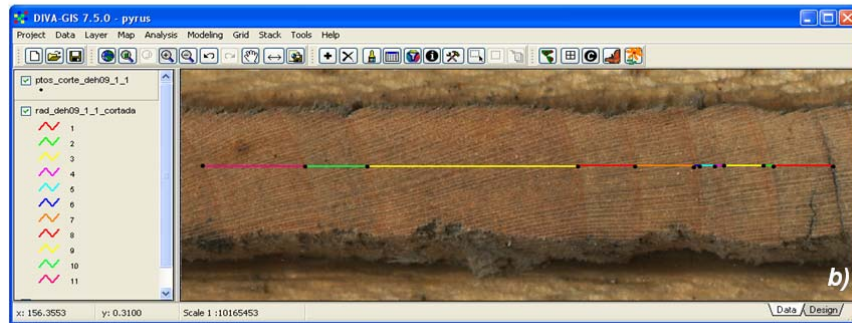
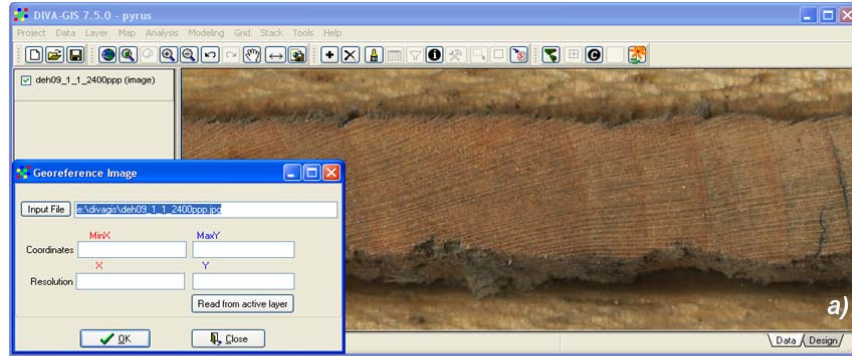


Figure 3. Tree-ring growth measurements for *A. pinsapo* and *P. bourgaeana* comparing GIS-SDI, LINTAB-TSAPWin™ and WinDENDRO™ for the period 1978-2007.

