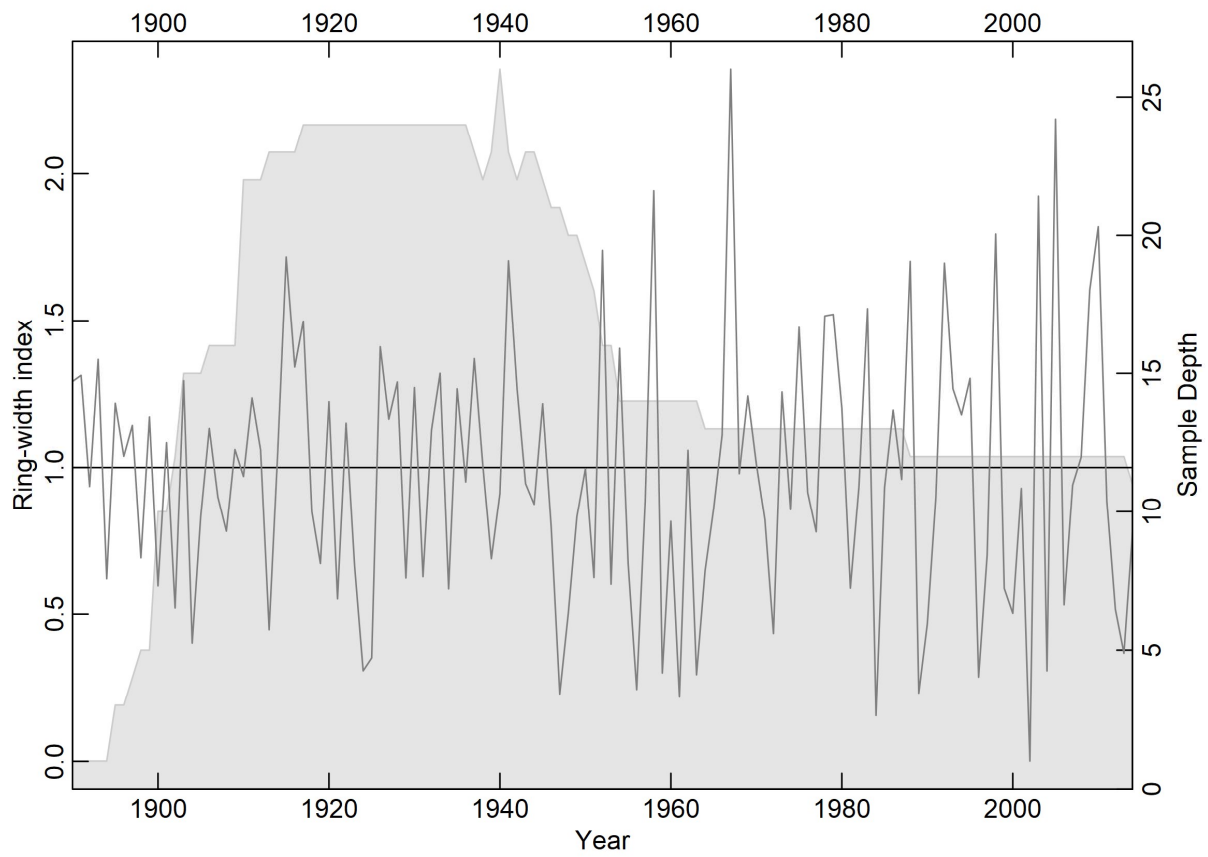


Supplementary Material  
For

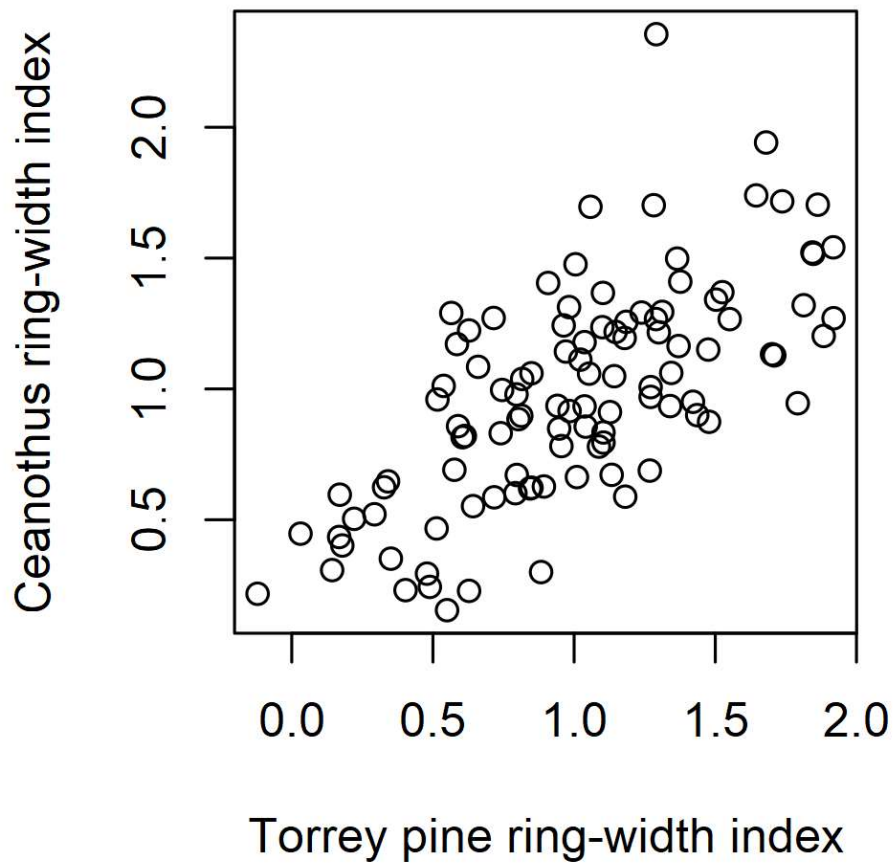
Margolis, E.Q., Lombardo, K., Smith, A., 2020. Dendrochronology of a rare, long-lived mediterranean shrub. *Tree-Ring Research* 76(2):61–73.

**Table S1.** Summary information for crossdated live and dead *Ceanothus verrucosus* from Point Loma, California.

Tree ID	Inner year	Type	Outer year	Type	Plant age	Status
CEA10	1895	Pith	1954	Outer	59	Dead
CEA13	1895	Pith	1945	Bark	50	Dead
CEA14	1907	Inner	1941	Outer	34	Dead
CEA15	1894	Pith	1938	Outer	44	Dead
CEA17	1901	Pith	2014	Bark	113	Live
CEA18	1898	Pith	2014	Bark	116	Live
CEA19	1905	Pith	2014	Bark	109	Live
CEA1	1884	Inner	1958	Outer	74	Dead
CEA20	1937	Pith	2015	Bark	78	Live
CEA21	1899	Pith	2014	Bark	115	Live
CEA2	1902	Inner	1992	Outer	90	Dead
CEA3	1896	Pith	1941	Bark	45	Dead
CEA4	1897	Pith	1951	Outer	54	Dead
CEA5	1894	Pith	1940	Outer	46	Dead
CEA7	1902	Pith	1963	Bark	61	Dead
CEA9	1873	Inner	1954	Outer	81	Dead



**Figure S1.** Standard ring-width chronology of *Ceanothus verrucosus* from Point Loma, California ( $n = 16$  plants, 1890 - 2014).



**Figure S2.** Scatter plot indicating the relationship between *Ceanothus verrucosus* and Torrey pine (*Pinus torreyana*, 1890 – 1994) standard chronologies. This relationship was used to confirm crossdating.